

# Scorpion 1812

ON IVECO DAILY 35S14H



**OIL & STEEL**  
AERIAL PLATFORMS

## AERIAL PLATFORM STANDARD EQUIPMENT

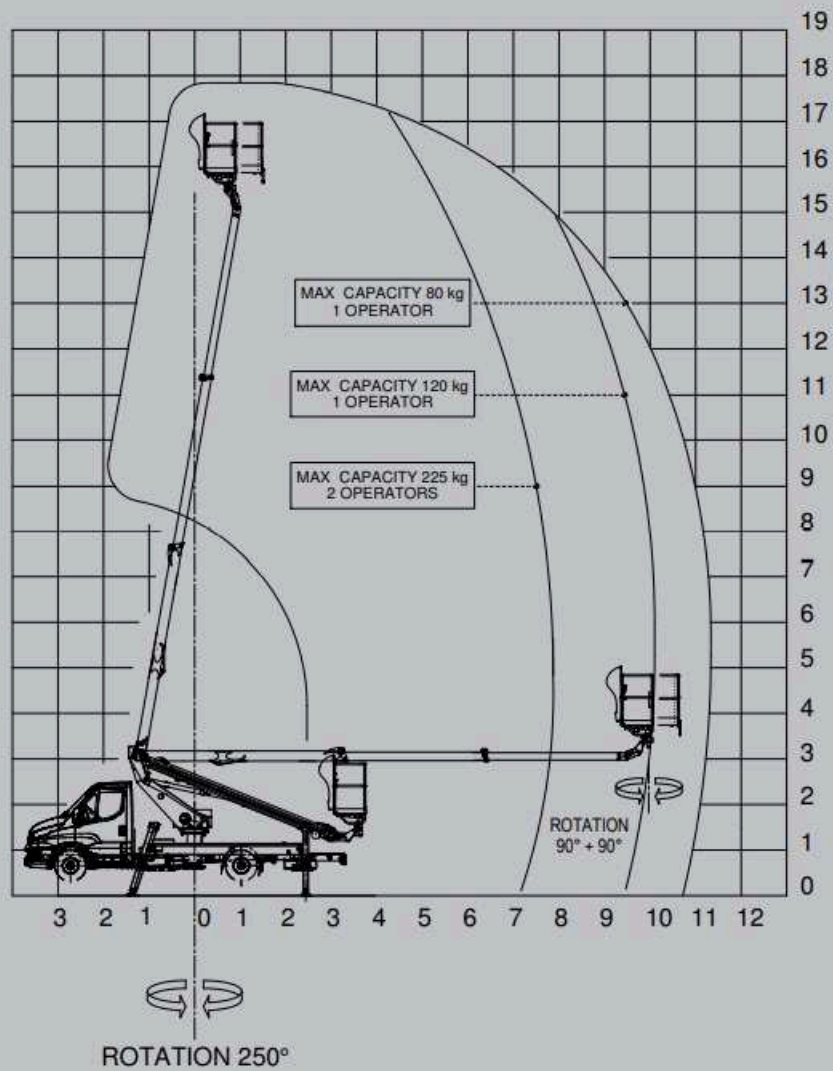
- Power takeoff with electrical start-up and automatic release
- Power takeoff ON with no handbrake warning siren
- Power takeoff hour counter fitted on the dashboard of the vehicle
- Warning lights on the hour counter inside the cabin showing PTO ON and when outriggers are outside the vehicle profile
- Automatic start-up and shutdown of the main engine (and potential auxiliary engine) from the basket and from the column
- Engine emergency stop button from the basket and from the column
- Single-phase, 220 or 110 VAC power socket and differential overload switch fitted on the basket
- Moment detection and limiting system
- Hand pump for emergency descent
- Aerial part and outriggers controls: hydraulic
- Two-person aluminum basket with dimensions 1400x700xh1100 mm
- Hydraulic rotation of the basket 90° right - 90° left
- Protective casing on the control box on the column and on the basket
- Thermal protection on the electrical system
- Lock valves on all cylinders
- Hydraulic circuit maximum pressure valves
- Anti-slip aluminum decking
- Standard painting white RAL 9016

## TRUCK STANDARD FEATURES

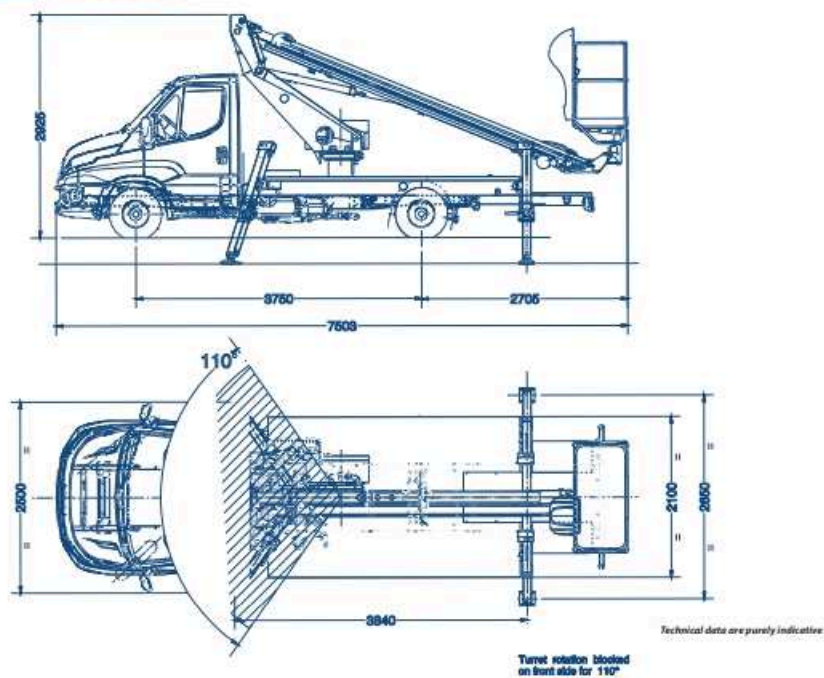
### IIVECO DAILY 35S14H wheelbase 3750 mm

- Mechanical gearbox - 6 gears - 350nm
- 4x2 axle configuration
- 3.5 Ton single wheels
- FIA engine 136 hp EURO VI HD
- Power windows
- Height adjustable driver seat (no air suspension seat)
- Central locking with remote control

**Scorpion 1812**



# Scorpion 1812



All technical data, descriptions and illustrations are purely indicative and subject to change at PM Oil&Steel own discretion and without notice

## TECHNICAL FEATURES

Max working height (m)	17,8 m
Max outreach (m)	12 m
Max basket capacity	225 kg
Basket dimensions	1400x700xh1100 mm aluminium [Fiberglass as optional]
Controls	Aerial part: hydraulic Outriggers: hydraulic
Turret rotation	250°
Basket rotation	90° left + 90° right
Outriggers	A Type
Machine length	7503 mm
Machine height	2925 mm
Machine width	2100 mm

**OIL & STEEL**  
AERIAL PLATFORMS